

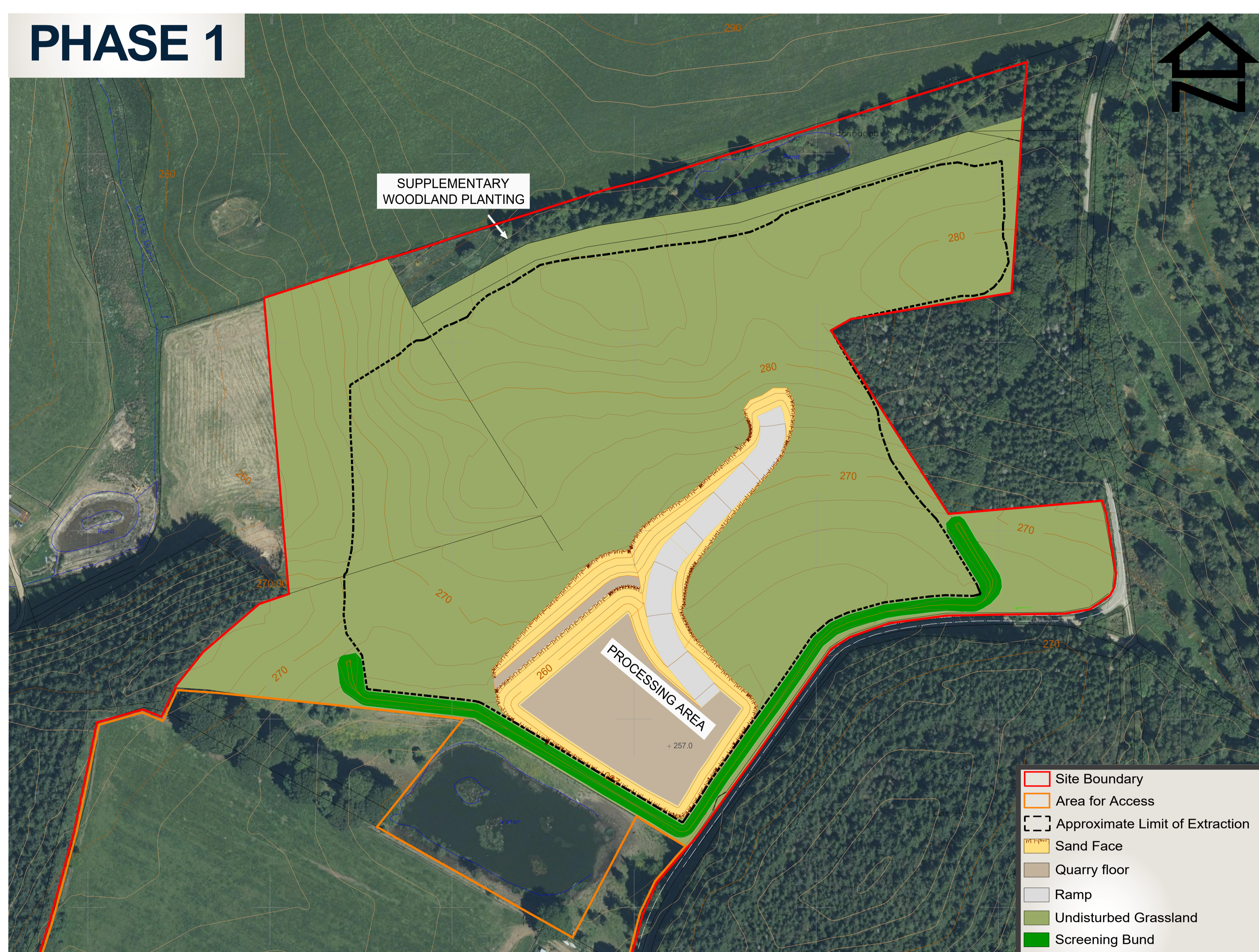


VIEW FROM SOUTH OF SITE, LOOKING IN A NORTHERN DIRECTION

## CRAIG FARM ESTATE

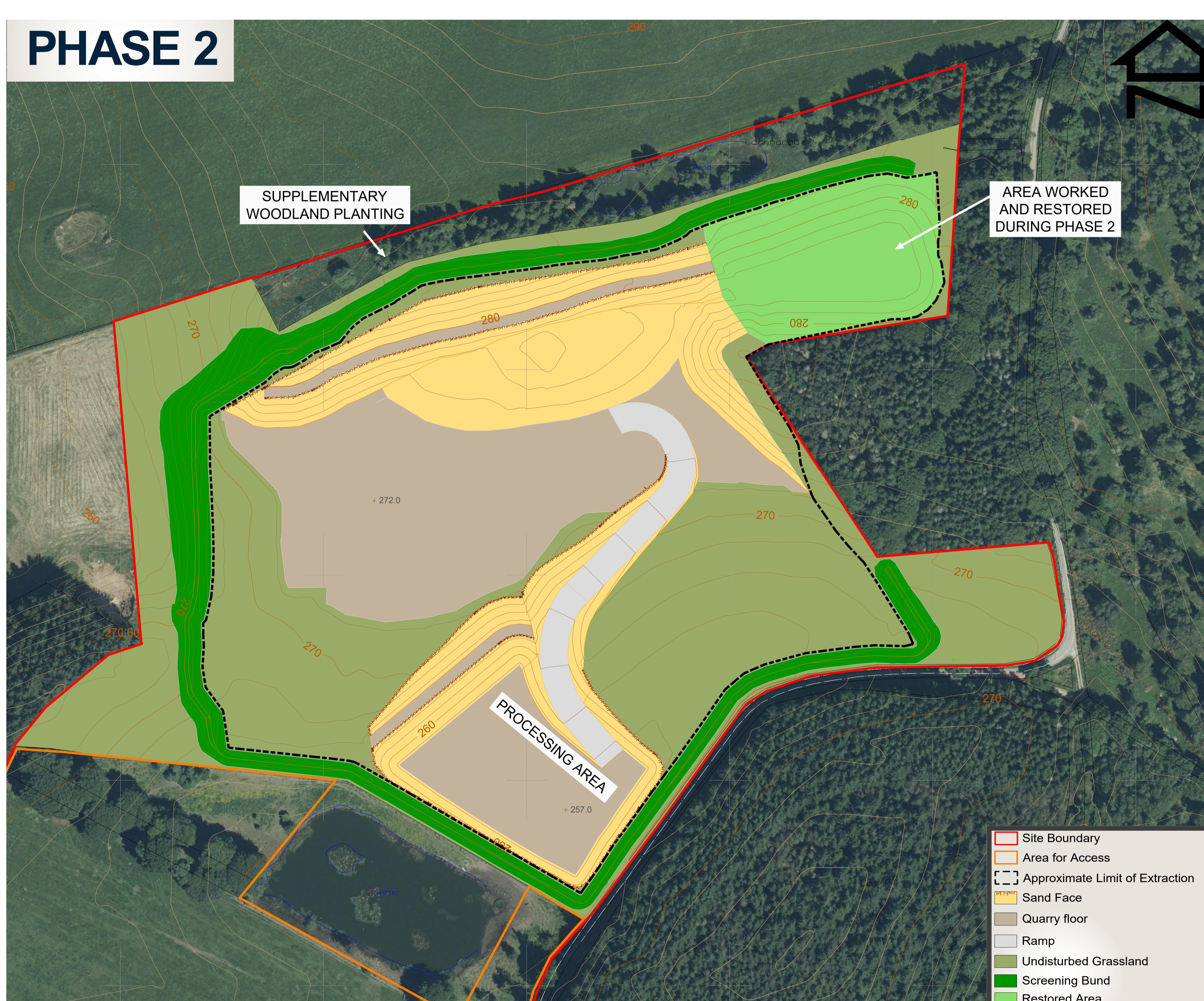
# THE PROPOSALS

### MINERAL EXTRACTION AND PROGRESSIVE RESTORATION



Soils/overburden stripped from the Phase 1 area will be placed in screening bunds on the Southern and Western periphery of the proposed extraction area. This bunding will be refined to facilitate the chosen access option once this is finalised.

Phase 1 provides for the development of an initial excavation in the south west of the proposed extraction area with extraction taking place to a depth of 257m AOD. the processing plant will be located within this area as soon as space allows where it will remain for the duration of operations. A ramp will be created during this phase to allow access to the remainder of the future excavation area. It is anticipated that mineral extraction in this phase will take place over a period of approximately 2.5 years.



In Phase 2 the excavation is extended to the central and North Western parts of the site, with the floor level being working to 272m AOD in this area. Soils and overburden from Phase 2 will be placed in screening bunds to the West and North of the quarry. These bunds will minimise views from these directions. Progressive restoration will commence in Phase 2 with the North Eastern corner of the site reprofiled, soiled and seeded once extraction operations are complete in this area. It is anticipated that sand and gravel extraction in Phase 2 will take approximately 6 years.