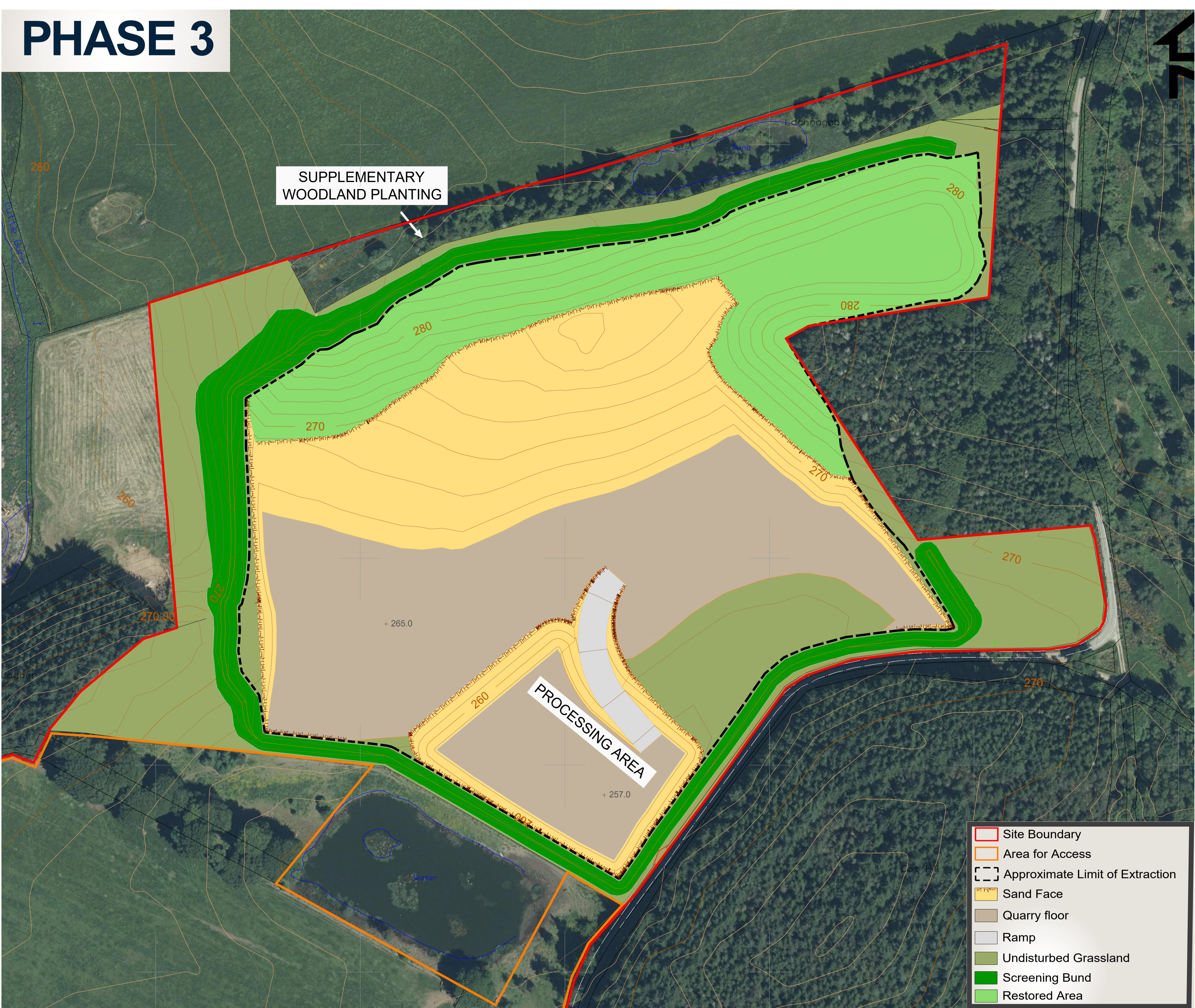
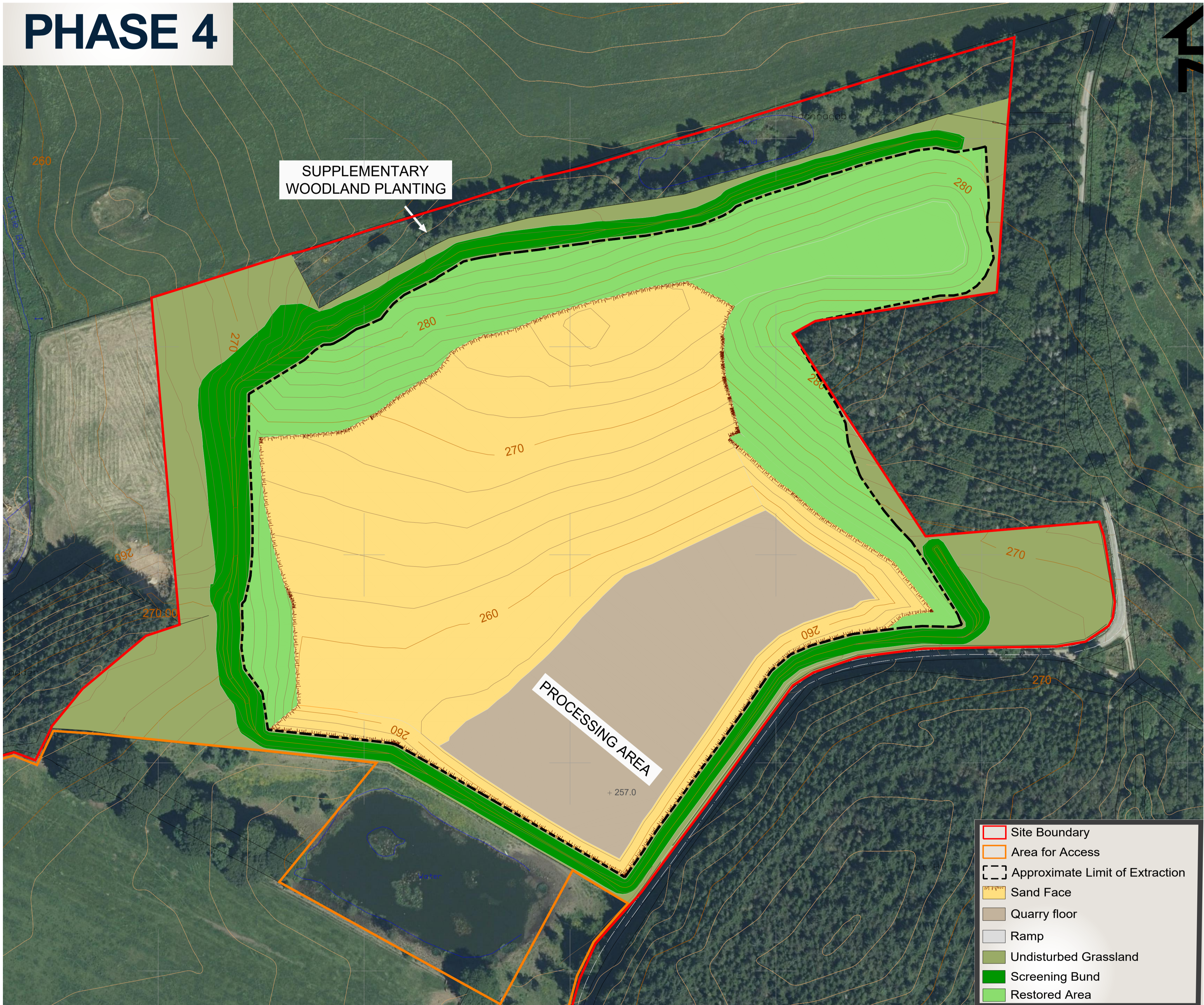


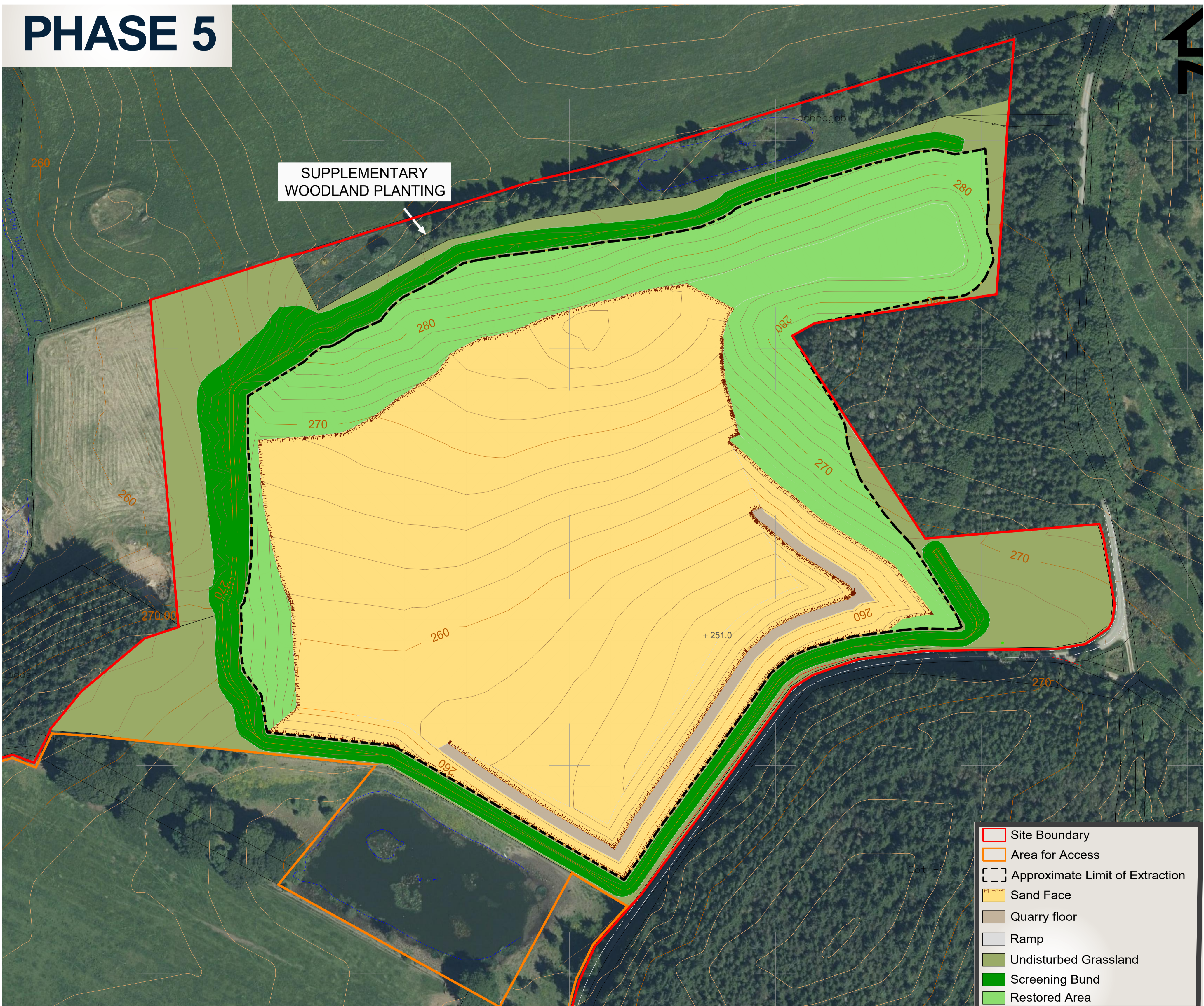
THE PROPOSALS



In Phase 3 the quarry floor is extended in a Southerly direction and deepened to 265m AOD. Progressive restoration will continue in this phase, with the remaining Northern quarry faces reprofiled, soiled and seeded/planted using soils stripped from the Phase 3 area and directly placed. It is anticipated that operations in this phase will take approximately 6 years.



In Phase 4 the quarry floor will be worked to its maximum Southern extent with the excavation deepened to 257m AOD across a wider area. Progressive restoration would be undertaken on the Eastern and Western boundaries of the excavation area using soils stripped from the Phase 4 area and directly placed. It is anticipated that operations in this phase will take approximately 5 years.



Phase 5 will see the remaining sand and gravel within the Southern part of the extraction area worked to a maximum depth of 251m AOD. It is anticipated that operations in this phase will take approximately 2 years.